

# PRORIL

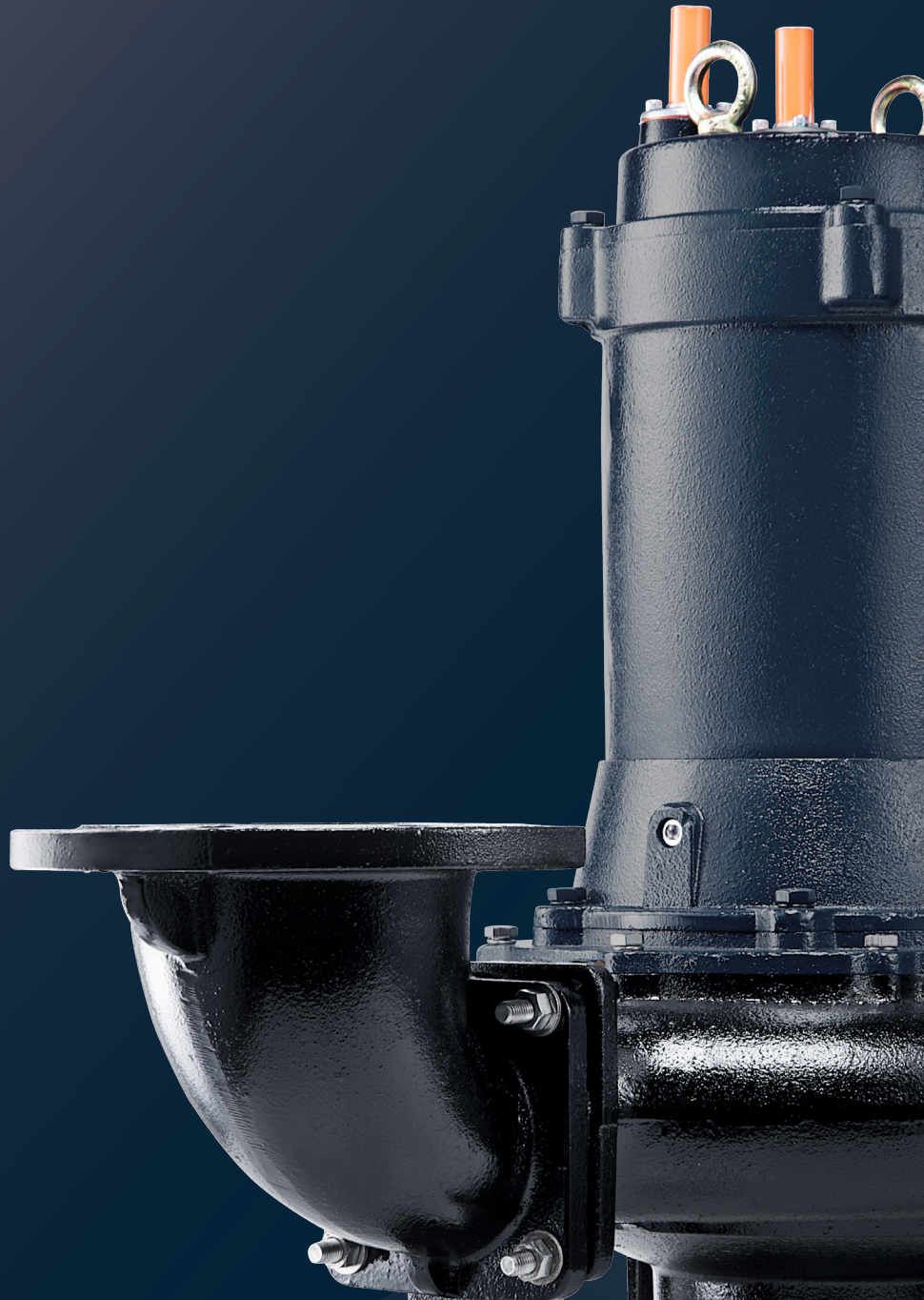
60Hz

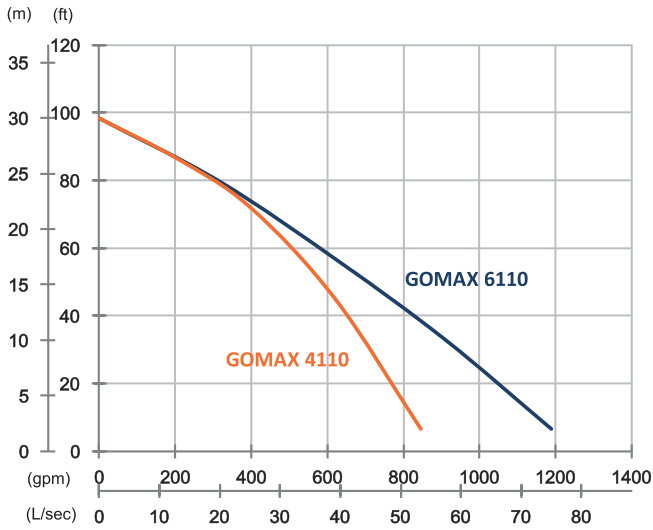
GOMAX Series, these non-clog pumps employ a single-channel enclosed impeller to efficiently and reliably transfer 76mm diameter solids without clogging. GOMAX series pumps are suitable for commercial and industrial wastewater applications.

Sewage Pump

## GOMAX 4110/6110

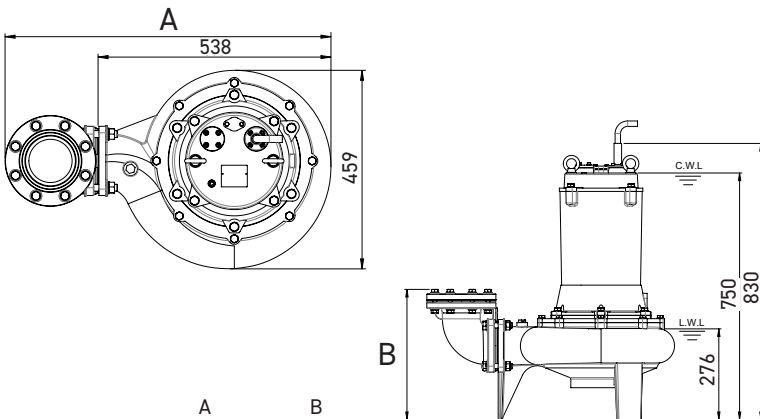
Single Channel Pump





	GOMAX 4110	GOMAX 6110
<b>OUTPUT</b>	15 HP (11 kW)	15 HP (11 kW)
<b>OUTLET</b>	4" (100 mm)	6" (150 mm)
<b>SOLID PASSAGE</b>	3" (76 mm)	3" (76 mm)
<b>Weight</b>	368 lbs/167 kg	386 lbs/175 kg
<b>HEAD</b>	Rated: 72 ft, 22 m Max: 98 ft, 30 m	Rated: 56 ft, 17 m Max: 98 ft, 30 m
<b>FLOW</b>	Rated: 396 gpm, 25 L/s Max: 845 gpm, 53.3 L/s	Rated: 634 gpm, 40 L/s Max: 1188 gpm, 75 L/s

<b>Pump Type</b>		Electric Submersible Pumps	
<b>Motor</b>	<b>Phase</b>	3-Phase	
	<b>Type</b>	Induction Motor	
	<b>Poles</b>	4 Pole (1750 rpm)	
	<b>Insulation</b>	Class F	
	<b>Protector</b>		Star-Delta · Miniature Thermal Sensors
			D.O.L. · Circle Thermal Protector
<b>Starter</b>		Star-Delta, D.O.L.	
<b>Lubricant</b>		Food Grade (ISO VG32)	
<b>Specs.</b>	<b>Impeller Type</b>	Single Channel	
	<b>Shaft Seal</b>		Double Mechanical Seal
			Silicon Carbide VS Ceramic/Carbon
	<b>Bearings</b>		C3 Shielded ball bearings
<b>Cable</b>		CSA-Certified PVC Jacketed Cables	
		33 ft (10 m) or longer upon request	
<b>Materials</b>	<b>Pump Casing</b>	Gray Iron	
	<b>Impeller</b>	Gray Iron	
	<b>Motor Frame</b>	Gray Iron	
	<b>Motor Shaft</b>	Stainless Steel	
	<b>Mouth Ring</b>	Copper Alloy	
<b>Max. Liquid Temperature</b>		40°C (104°F)	
<b>Max. Submersion Depth</b>		20 m (66 ft)	
<b>pH Range</b>		pH 5 - pH 8	
<b>Guide Rail</b>		GRN-04	



	A	B
GOMAX 4110	753	379
GOMAX 6110	813	452

unit : mm  
C.W.L : Continuous running water level  
L.W.L : Lowest running water level